

# TEMPLO

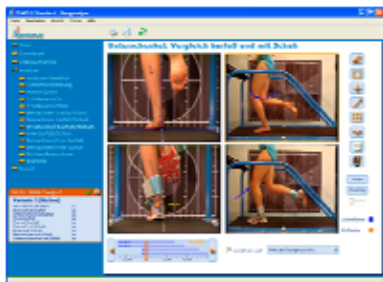
Professional Motion Analysis Software



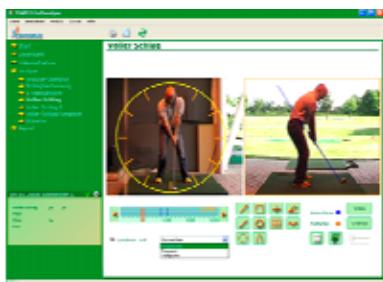
Biomechanics : Sports : Engineering : Podiatry : Coaching : Physiotherapy ; Rehabilitation : Education : Behavioural Skills : Healthcare



TEMPLO® has been designed for use without needing to refer to the manual.



With TEMPLO® you can create your own defined 'analysis protocol'. This enables you to formulate and operate sport/individual specific analyses. TEMPLO® incorporates 3 professional 2D gait analysis protocols, as well as a 'General' performance/skill analysis programme.



The concept of TEMPLO® is based on a very flexible database structure, IVM (intelligent video management), customisable analysis functions and a powerful report.

## Additional Modules Available

- ✓ High speed camera support (up to 300 fps/Hz) (NEW)
- ✓ EMG/Force platform: Data acquisition and display
- ✓ Force vector overlay in video clips
- ✓ 3D still image measurement
- ✓ 3D automatic data acquisition

TEMPLO® Basic

### TEMPLO® Basic features:

- ✓ DV capture from 1 camera
- ✓ User definable 'analysis protocol' creation (NEW)
- ✓ Advanced report creation with user defined text & images (NEW)
- ✓ Real time data compression
- ✓ Intelligent video management system (IVM) in a flexible database
- ✓ Variable video views (1, 2, 4 views)
- ✓ Powerful calibration, analysis and drawing tools
- ✓ Fast, manual measurements of angles and distances
- ✓ Easy identification and labelling of synchronisation events
- ✓ Video overlay and split screen
- ✓ Report: Free player to give to patients or clients

TEMPLO® Standard

### TEMPLO® Standard features:

In addition to features listed in TEMPLO® Basic, the standard model boasts:

- ✓ Synchronous DV capture from 2 cameras
- ✓ Automated tracking of markers or patterns (NEW)
- ✓ Advanced drawing and analysis tools
- ✓ Automated measurement systems
- ✓ Automated video views
- ✓ Enhanced CD/DVD creation, enabling fast backup of data
- ✓ Report: the format and individual style of reports is highly adaptable
- ✓ Optional additions: High speed camera support (NEW)
- ✓ Optional additions: pedography integration (see TEMPLO Professional)

TEMPLO® Professional

### TEMPLO® Professional features:

In addition to features listed in TEMPLO® Basic & Standard, the professional model includes:

- ✓ Synchronous DV capture from up to 4 cameras
- ✓ Stroboscope (NEW)
- ✓ Pedography: remote measurement and display of foot pressure distribution & synchronized integration with TEMPLO® video clips (supporting brands including RSScan, Tekscan etc.)
- ✓ Advanced definition of synchronisation events (time and force based)
- ✓ Export data to Microsoft Excel or other third party software
- ✓ Backup of video clips and measured data
- ✓ Advanced image processing for fixed camcorder
- ✓ Optional additions: software for EMG and force platform analysis
- ✓ Optional additions: support of A/D boards

Find more information at [www.mar-systems.co.uk](http://www.mar-systems.co.uk)

## Free Demo version available

More information about the various product lines can be found on our website.

[www.mar-systems.co.uk](http://www.mar-systems.co.uk)